







153 Dobbin Hill

Ecclesall • Sheffield • S11 7JF

Asking Price £550,000

A beautiful 1930s 4 bedroom detached property occupying a lovely plot with gardens to the front and rear and delightful open views. This well-loved family home, one of only two of this design on Dobbin Hill, has many appealing period features and a range of accommodation that offers flexible use to the growing family or downsizers with the possibility to use reception rooms on the ground floor as a bedroom. On the ground floor is a kitchen, fitted with matching wall and base units, complemented by a matching work surface, integrated oven and induction hob, together with space for a range of appliances. There is a wood burning stove set to a stone hearth and a wall mounted Baxi gas combination boiler. The living room has another wood burning stove set to a brick hearth and French doors opening to a decked balcony with lovely open views and overlooking the rear garden. There is a separate formal dining room and a study providing ideal work from home space. The bathroom has a suite in white comprising bath with electric shower over, pedestal wash hand basin and part tiled walls. Separate W.C. On the 1st floor are 4 well-proportioned bedrooms and a separate W.C. Outside the property occupies an excellent plot, with steps leading down from the pavement to the front garden, well stocked with a range of attractive shrubs and plants, and a useful understairs bike store. To the rear is a lovely natural wildflower garden lovingly created by the present owners over recent years, with a pond, fruit trees and 2 patio areas ideal for sitting out and entertaining. The rear garden is particularly private with a lovely backdrop, and is surrounded by a range of natural hedge borders. A half door at the rear opens to very useful underhouse storage and a workshop area.





- Detached House

- 4 Bedrooms

- Lovely Views

- Large Wildflower Garden

- Versatile Accommodation

- Very Popular Location

- Excellent Local Schools

- Period Features

- Freehold

- EPC - tbc





153 DOBBIN HILL

APPROXIMATE GROSS INTERNAL AREA = 144.1 SQ M / 1551 SQ FT

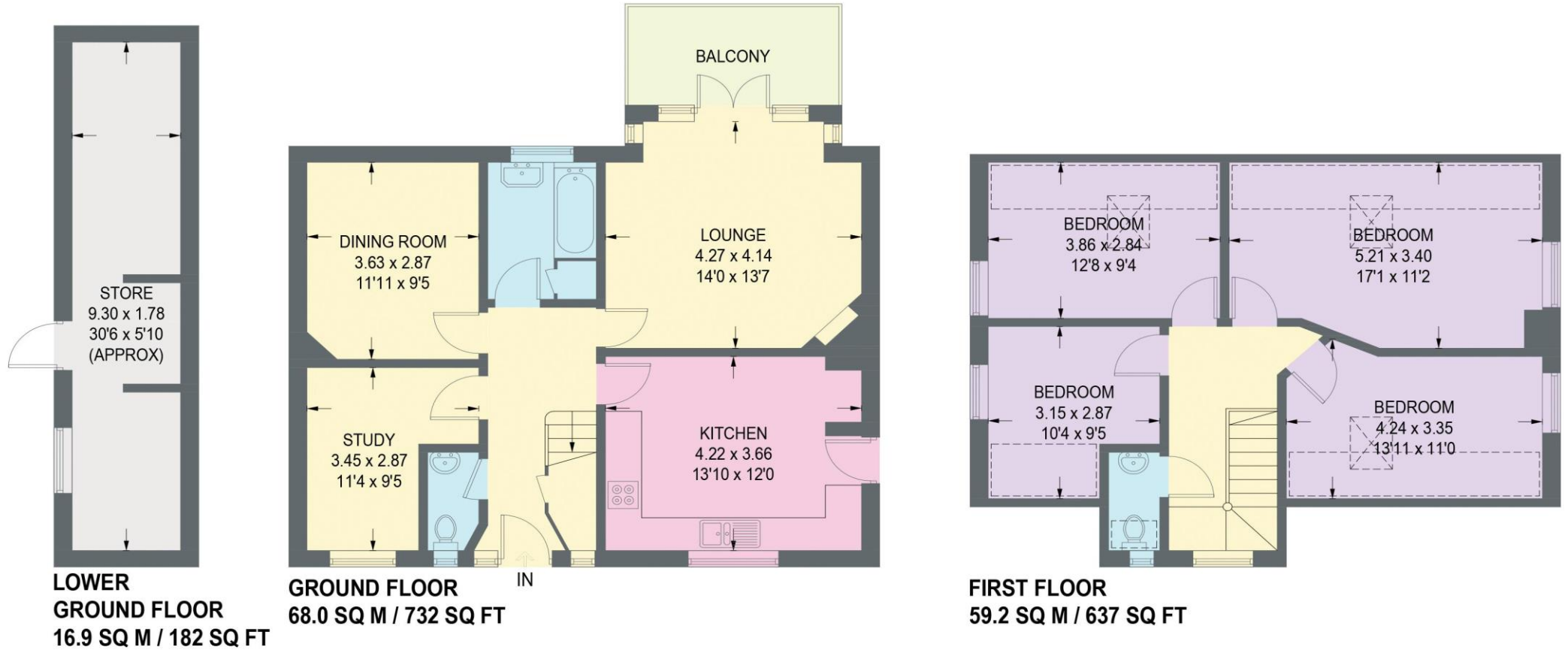


Illustration for identification purposes only,
measurements are approximate, not to scale.



haus

West Bar House, 137 West Bar, Sheffield, S3 8PU
hello@haushomes.co.uk haushomes.co.uk

0114 276 8868